

# MASSERIA CARMELA

ITALY | PUGLIA



**5 Bedrooms**

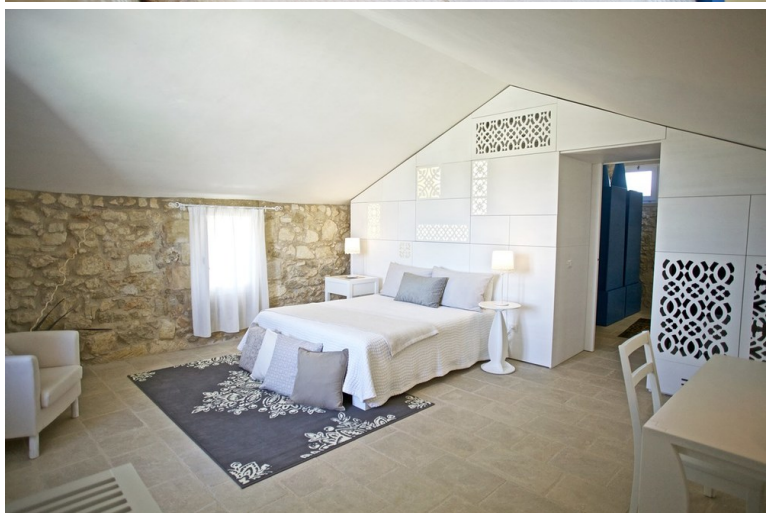


**10 Guests**



**£5910 - £11955 / week**







- › Air Conditioning
- › Chef service available
- › Family villa
- › Near golf courses
- › Near shops/restaurants
- › With cot / highchair
- › With WIFI

"Situated at the heart of Salento, near the Baroque town of Lecce, this ancient Apulian farmhouse is now a refined luxury property with a cool contemporary feel, boasting large spacious gardens, terraces and a large infinity pool".

An elegant blend of contemporary minimalist decor and traditional architecture based on the use of local stone and whitewashed walls from the rural Salento heritage, makes this property an elegant retreat for 10 guests. The infinity pool is surrounded by well kept gardens interspersed with tall palm trees and terraces equipped for outdoor living and al fresco dining. The accommodation is arranged over a main 3-bedroom villa and a 2-bedroom garden annex. Some renowned destinations in Salento, such as Galatina, Lecce and Otranto, are all within half-an-hour's drive from this villa.

## **ACCOMMODATION**

### **MAIN VILLA**

#### **Ground floor:**

Entrance.

Large living room.

Dining room.

Kitchen.

Bedroom 1: Double bedroom, frigo bar, en suite shower room.

Bedroom 2: Double bedroom, frigo bar, en suite shower room.

2 bathrooms.

#### **First Floor:**

Bedroom 3: Double bedroom, frigo bar, en suite shower room.

### **GARDEN ANNEX**

Bedroom 4: Double bedroom, en suite shower room, private patio.

Bedroom 5: Double bedroom, en suite shower room.

#### **Grounds:**

Well maintained grounds with garden and ample lawn areas. Gazebos, terraces with outdoor dining area.

Private 12m x 6m infinity pool (depth: 1.40m; open from 01/04 to 31/10; jets), sunbathing area, bathroom.

## **DISTANCES**

Airport (Brindisi) 70 km.

Airport (Bari) 190 km.

Railway station (Lecce) 25 km.

Seaside - sandy beach (Torre dell'Orso) 15 km.

Delicatessen 500 metres.

Restaurant 200 metres.

Shops, banks, restaurants (Martano) 1 km.

Fashion Outlet (Puglia Outlet Village) 160 km.

Golf (Acaya) 20 km.

Tennis court (Martano) 2 km.

Horse riding 10 km.

Harbour (Brindisi) 70 km.

Galatina 12 km.

Lecce 25 km.

Gallipoli 37 km.

Alberobello 140 km.