

360

PRIVATE VILLAS

VILLA HELICONIA

CARIBBEAN | BARBADOS



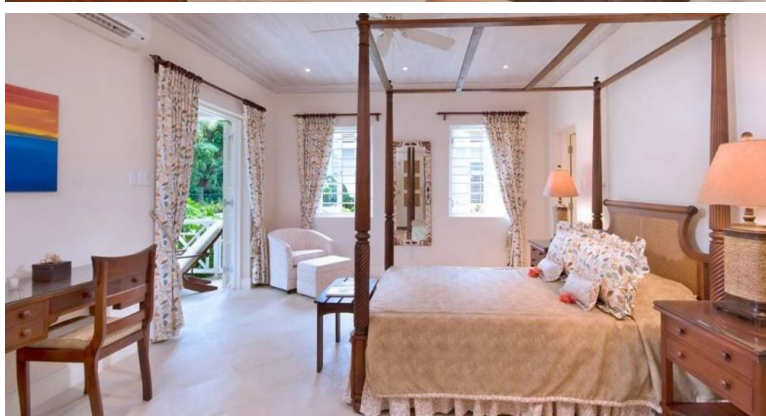
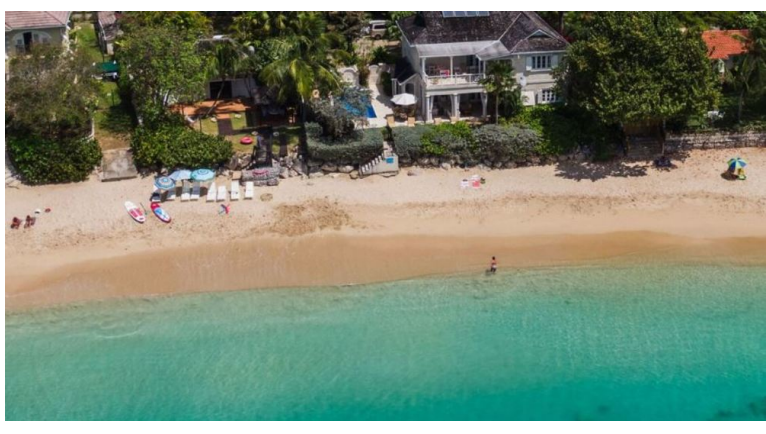
4 Bedrooms



8 Guests



£15900 - £20985 / week



- > Air Conditioning
- > Beach within 10 minute walk
- > Chef service available
- > Family villa
- > Near shops/restaurants
- > Near the airport
- > Near the beach
- > Romantic villa
- > With seaviews
- > With WIFI

"This luxurious, Caribbean-style villa with private pool and 4 air-conditioned bedrooms sits in a prime beachfront location just 5 minutes away from historic Speightstown, on Barbados' West Coast".

THE VILLA STAFF INCLUDE A PRIVATE CHEF TO PREPARE 3 MEALS PER DAY AND A HOUSEKEEPER.

On entering this property, guests will discover a private paradise among lush tropical gardens and Gibbes' beach literally on your doorstep, directly accessible from the garden via a private gate. Snorkelling and other water sports are available on the beach, which is also ideal for long romantic strolls towards the north where Gibbes beach meets Mullins beach. You can sample local delicacies in the comfort of your dining terrace prepared for you by the villa chef or you can try one of the local restaurants in Speightstown, for a change of scene.

ACCOMMODATION

Ground floor:

Comfortable living room, flat screen cable TV/ DVD, iPod dock, ceiling fan, door to expansive patio with outdoor furniture.

Kitchen, door to terrace.

Bedroom 1: King size bed, air con, en suite bathroom, shower, door to patio, garden view.

First floor:

Bedroom 2: King/ Twin beds, air con, en suite shower room, door to shared balcony, sea views.

Bedroom 3: King/ Twin beds, air con, en suite shower room, door to shared balcony, sea views.

Bedroom 4: Queen size bed, air con, en suite shower room, door to balcony, garden view.

Grounds:

Lush tropical gardens. Pool deck with private pool (Roman steps), sunbathing terrace with sun loungers, water feature, sea views. Outdoor shower. Direct access to the beach.

Please note: There is ongoing construction next door. Rates only applicable while construction is ongoing next door.

DISTANCES

Speightstown: 3 km.

Holletown: 6 km.

Bridgetown: 16 km.

Airport: 32 km.