

360

PRIVATE VILLAS

TENNIS DELIGHT

ENGLAND | LONDON



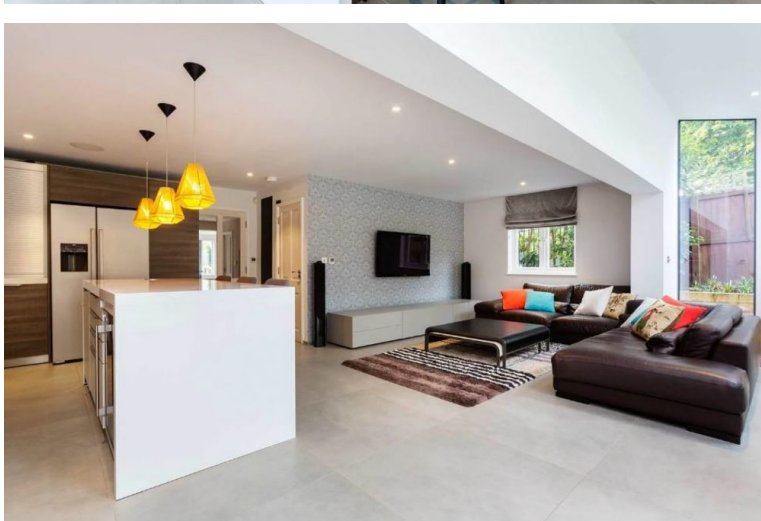
4 Bedrooms



8 Guests



POA



- > Family villa
- > Near shops/restaurants
- > Near the airport
- > With cot / highchair
- > With WIFI

"On the edge of Wimbledon village, this contemporary styled and furnished family home with private garden offers its guests the chance to enjoy the best of the British countryside and the attractions of central London in a truly idyllic setting close to the renowned tennis courts, and Wimbledon and Richmond Parks".

Built over 3 levels, this beautiful family home is impeccably decorated and features bright, open plan living areas, ideal for socialising, 4 bedrooms plus a nursery room for a child, modern elegant shower rooms and a delightful private garden with al fresco dining facilities and children toys: all this just 30 minutes by tube from central London.

ACCOMMODATION

Living area:

Open plan living/ dining/ kitchen/ breakfast area, TV, sofas, sky lights, floor-to-ceiling patio doors to garden. Second cosy living room, TV.

Bedrooms:

Bedroom 1: king size bed, bathroom, shower, WC.

Bedroom 2: king size bed, shower room, walk in shower, WC.

Bedroom 3: twin beds, shower room, walk in shower, WC.

Bedroom 4: double size bed, shower room, walk in shower, WC.

Nursery: baby cot (a futon can accommodate 2 further children or an adult on request).

Garden:

Private flat garden laid to lawn, children's swings, Al fresco dining terrace, table, BBQ. Parking on the drive.