

# VILLA ALMYRIDA

GREECE | CRETE



**3 Bedrooms**

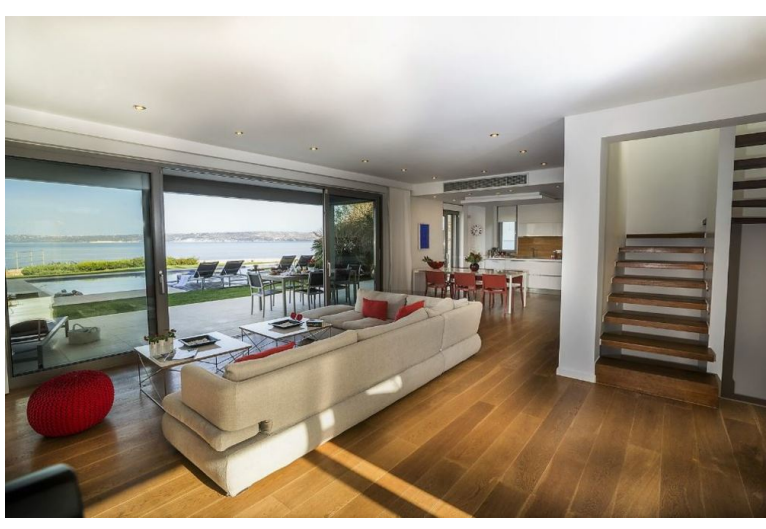


**6 Guests**



**POA**





- › Air Conditioning
- › Beach within 10 minute walk
- › Chef service available
- › Dogs allowed
- › Family villa
- › Heatable Pool
- › Near shops/restaurants
- › Near the airport
- › Near the beach
- › With cot / highchair
- › With seaviews
- › With WIFI

"Within walking distance of the fishing village of Almyrida, on Crete north-western coast, this exclusive property with heatable pool boasts a prime beachfront situation and the latest modern comforts for a luxury Greek island holiday".

Overlooking a stunning Cretan bay on the western side of the island, and offering 200m<sup>2</sup> of living area, this majestic villa welcomes up to 6 guests in utter comfort. The property offers every possible convenience, while the tremendous view is truly captivating and utterly relaxing; it also boasts being within walking distance to restaurants and the sandy beach of Almyrida. The large swimming pool promises refreshing moments of joy while the garden that surrounds it completes the scenic image. The interiors are minimalist and elegant and the space generous to comfortably host your social gatherings whilst on holiday. This luxury villa in Crete has everything one needs for a restful Greek island holiday. It is the perfect retreat from which to explore the fascinating island of Crete, as well as to enjoy precious moments with your loved ones.

## ACCOMMODATION

(200 m<sup>2</sup>)

### **Pool Level:**

Entrance.

Living room, TV, DVD, A/C, fireplace, sound system, door to terrace, sea & sunset view.

Dining area.

Fully equipped open plan kitchen.

### **Upper Level:**

Double bedroom, king size bed, TV, DVD, A/C, en suite bathroom, Jacuzzi tub, shower, king size bed, door to balcony, sea & sunset view.

Double/ Twin bedroom, 2 single joinable beds, TV, DVD, A/C en suite bathroom, door to balcony, sea & sunset view.

### **Lower Ground Level:**

Double/ Twin bedroom, 2 single joinable beds, TV, A/C, sound system, door to lower garden.

Toilet Room.

Shower Room.

Hamam Room.

### **Grounds:**

Terraced grounds comprising lawn areas and terraces with panoramic views. Private heatable swimming pool (Roman steps & ladder), decked sunbathing area with sunbeds and parasols, shaded lounge & seating area, covered terrace with dining area. Parking.

## DISTANCES

Nearest Beach: Almyrida sandy beach 400 metres.

Nearest Town/ Village: Almyrida 400 metres; Chania 25 km.

Nearest Port: Chania 25 km (30 mins' drive).

Nearest Airport: Chania International Airport 32 km (35 mins' drive).