

360

PRIVATE VILLAS

VILLA SAVONNE

SPAIN | ISLAND OF IBIZA



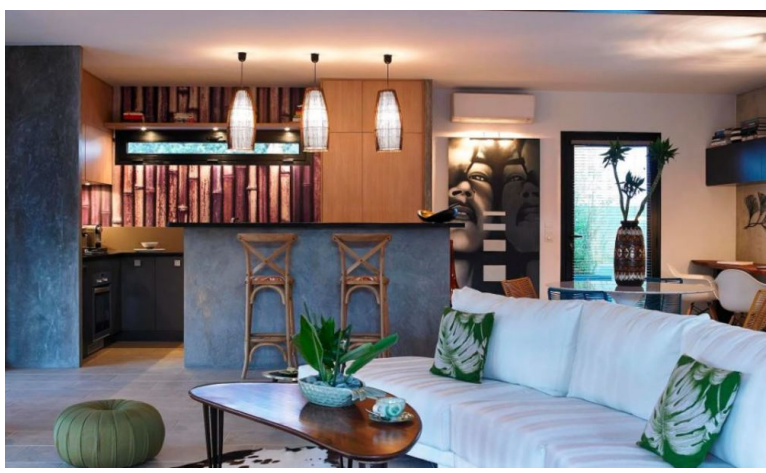
2 Bedrooms



4 Guests



£5200 - £7150 / week



- > Air Conditioning
- > Family villa
- > Near shops/restaurants
- > Near the airport
- > Near the beach
- > Romantic villa
- > With WIFI

"Meticulously designed and decorated with exotic-inspired features, this delightful, romantic retreat boasts an incredible charm as well as a Japanese style swimming pool & jacuzzi - ideal for a family or a couple, the villa is just 3 km away from Ibiza's west coast near Sant Antoni".

This Ibizan holiday home enjoys a wealth of relaxing outside space and beautiful interiors, while being only a 10 minute drive to the gorgeous beaches of Cala Conta, Cala Tarida and Cala Bassa. Take a dip in the Japanese style swimming pool, relax in the Jacuzzi or pull up a lounge on the poolside wooden deck and bask in the warm Ibizan sunshine. On the terrace which wraps round property, the bespoke al-fresco living spaces are to be found and include a covered dining area seating eight, a lounge space with comfortable sofa seating and a king size lounge/day bed, all of which are surrounded by the stunning exotic gardens.

ACCOMMODATION

MAIN HOUSE

Open-plan living/ dining areas, large modern sofa, Sat TV, air conditioning, music deck, table for 6 people. Modern, fully equipped, American style kitchen.

Utility room, washing machine, tumble dryer, iron, ironing board, extra fridge.

Bedroom 1: (40 m2), king size bed, LED Sat TV, air conditioning, safe box, door to private terrace, en-suite bathroom, shower.

SEPARATE ANNEX

Bedroom 2: (50 m2), king size bed, Sat TV, air conditioning, safe box, alarm and dressing area. en-suite bathroom, shower.

Lounge area with vintage designer furniture.

Grounds:

Exotic garden with lush foliage, decked terrace surrounding the villa. Private 10m x 3.5m swimming pool, 2m x 2m Jacuzzi, sunbathing area, covered terrace with al fresco dining facilities.

DISTANCES

Cafe: 1 km.

Restaurant: 2 km.

Beach: 3 km.

Bar: 4 km.

Supermarket: 7 km.

Airport: 20 km.